

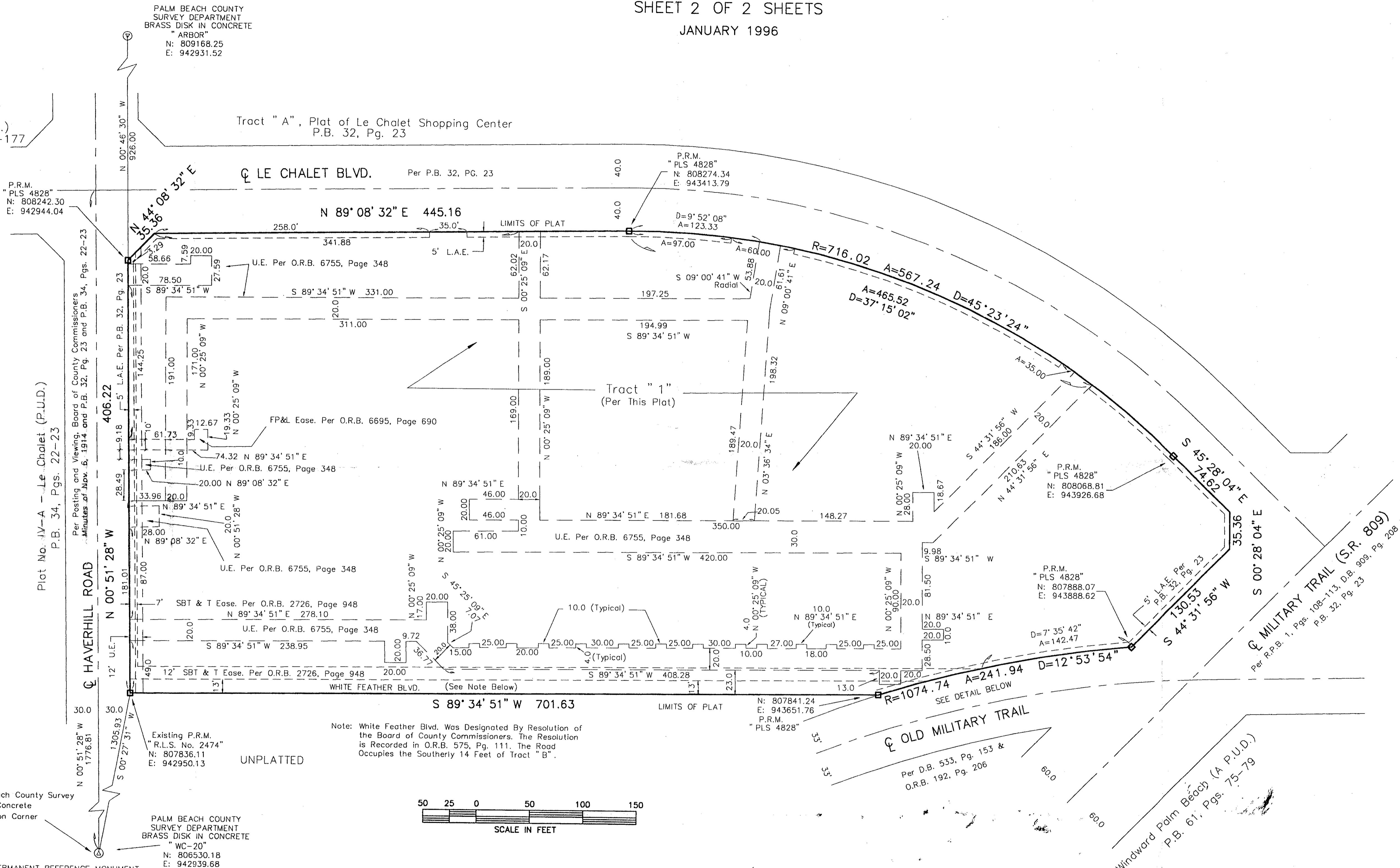
**LE CHALET SHOPPING CENTER TRACT "B" REPLAT, P.C.D.**  
 A REPLAT OF TRACT "B" OF THE PLAT OF LE CHALET SHOPPING CENTER  
 AS RECORDED IN PLAT BOOK 32, PAGE 23 OF THE PUBLIC RECORDS OF PALM BEACH COUNTY, FLORIDA  
 IN SECTION 13, TOWNSHIP 45 SOUTH, RANGE 42 EAST  
 PALM BEACH COUNTY, FLORIDA  
 SHEET 2 OF 2 SHEETS  
 JANUARY 1996

0611-002

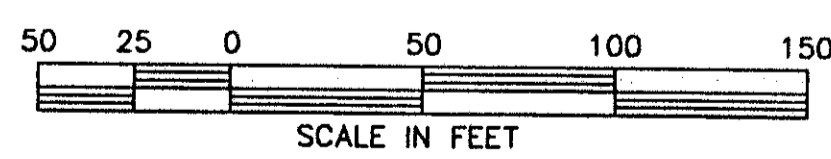
**152**

Plat No. II-A-  
Le Chalet (P.U.D.)  
P.B. 31, Pgs. 176-177

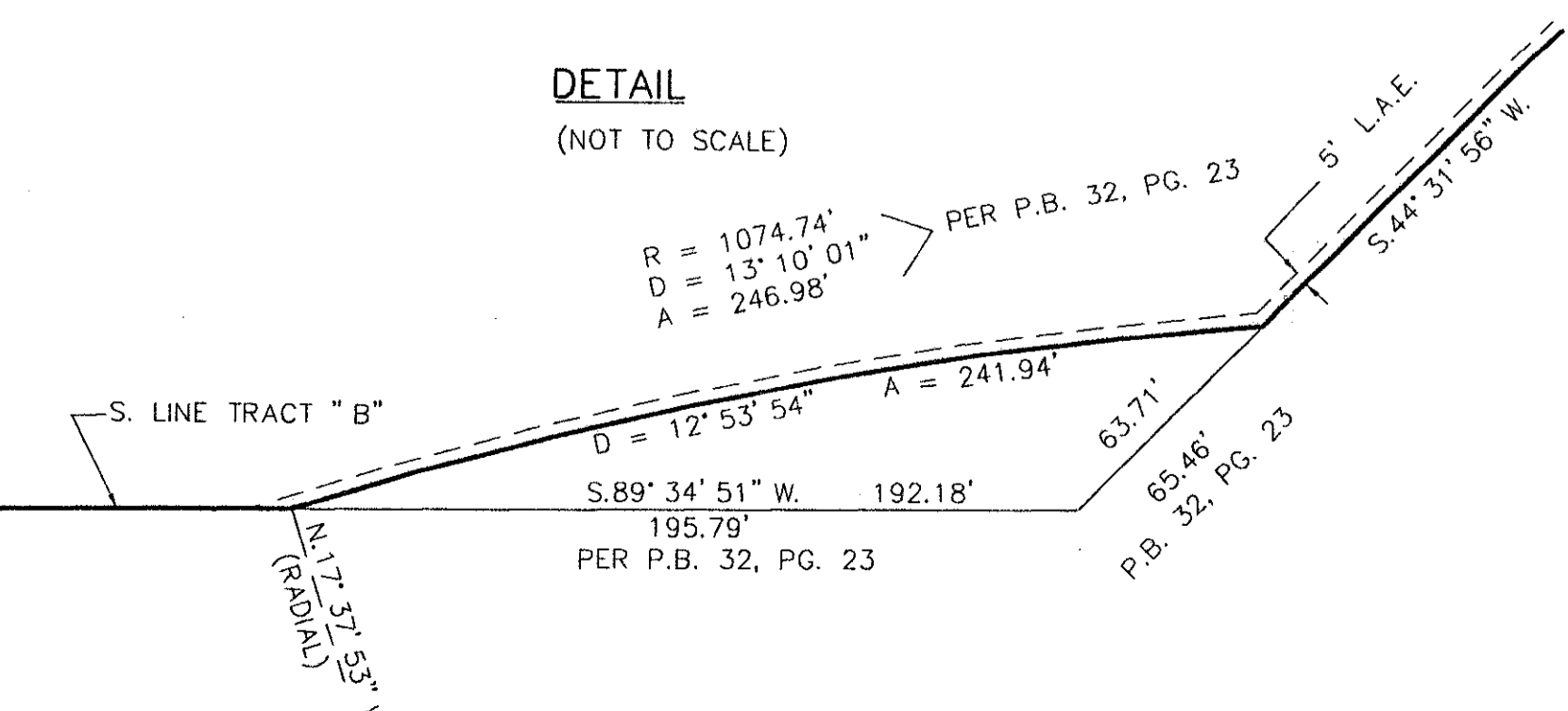
Tract "A", Plat of Le Chalet Shopping Center  
P.B. 32, Pg. 23



Note: White Feather Blvd. Was Designated By Resolution of the Board of County Commissioners. The Resolution is Recorded in O.R.B. 575, Pg. 111. The Road Occupies the Southerly 14 Feet of Tract "B".



**DETAIL**  
(NOT TO SCALE)



Witness Corner - Palm Beach County Survey Department Brass Disc in Concrete  
20' North of Quarter Section Corner

PALM BEACH COUNTY SURVEY DEPARTMENT  
BRASS DISK IN CONCRETE  
"WC-20"  
N: 806530.18  
E: 942939.68

- LEGEND**
- DENOTES PERMANENT REFERENCE MONUMENT
  - CENTERLINE
  - A = ARC LENGTH
  - D = DELTA (CENTRAL ANGLE)
  - R = RADIUS
  - D.B. = DEED BOOK
  - EASE. = EASEMENT
  - FP&L = FLORIDA POWER & LIGHT COMPANY
  - L.A.E. = LIMITED ACCESS EASEMENT
  - O.R.B. = OFFICIAL RECORD BOOK
  - P.G. = PAGE
  - PLAT BOOK
  - P.U.D. = PLANNED UNIT DEVELOPMENT
  - R.P.B. = ROAD PLAT BOOK
  - R.L.S. = REGISTERED LAND SURVEYOR
  - SBT&T = SOUTHERN BELL TELEPHONE & TELEGRAPH
  - S.R. = STATE ROAD
  - U.E. = UTILITY EASEMENT
  - N: = NORTHING (GRID)
  - E: = EASTING (GRID)
  - P.R.M. = PERMANENT REFERENCE MONUMENT

SUPERVISOR: [Name]  
 BOOK: 77  
 PAGE: 152  
 FLOOD ZONE: 190B  
 ZONING: CG-34  
 ROAD: 34  
 SE  
 PUD NAME: LE CHALET SHOPPING CENTER  
 ZIP CODE: 33436

0611-002

SCALE: 1" = 50'	<b>NICK MILLER, INC.</b> Surveying Planning & Development Consultants	DRAWN BY:
DATE: Jan. 1996		CHK:
<b>LE CHALET SHOPPING CENTER TRACT "B" REPLAT</b>		
2560 RCA Blvd. • Suite 105 Palm Beach Gardens, Florida 33410 (407) 627-5200		DRAWING NUMBER <b>860058AV</b>